

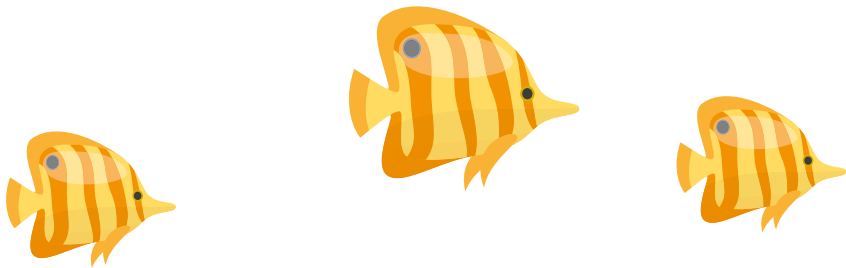
SISTERS' ISLANDS MARINE PARK

DIVE TRAILS



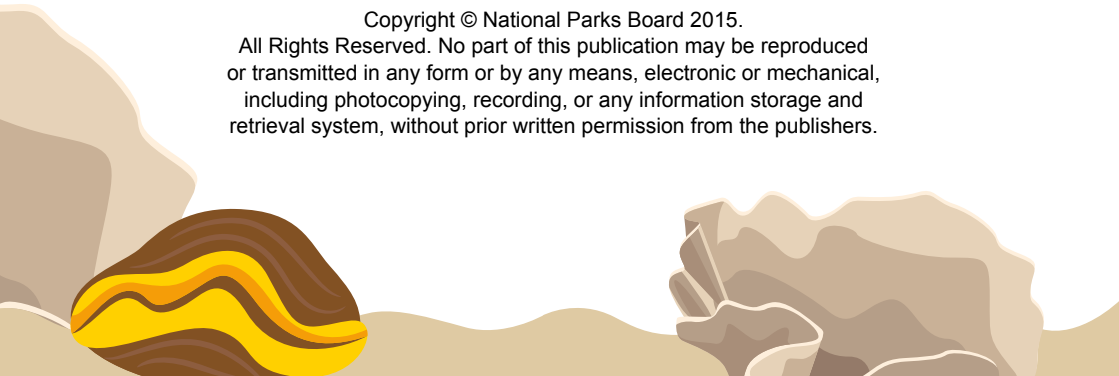
CONTENTS

Introduction	1
Details of the Dive Trails	2
Before the Dive	4
Green Fins	5
Deep Dive Trail Activities	6
Shallow Dive Trail Activities	8
After the Dive Trail	10
Forms of Hard Corals	11
Some Common Reef Fishes	12



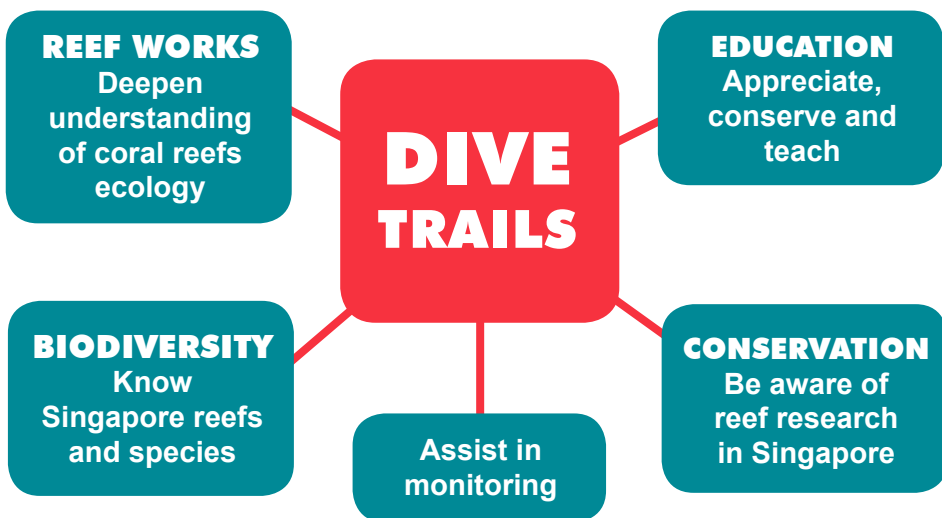
Copyright © National Parks Board 2015.

All Rights Reserved. No part of this publication may be reproduced or transmitted in any form or by any means, electronic or mechanical, including photocopying, recording, or any information storage and retrieval system, without prior written permission from the publishers.



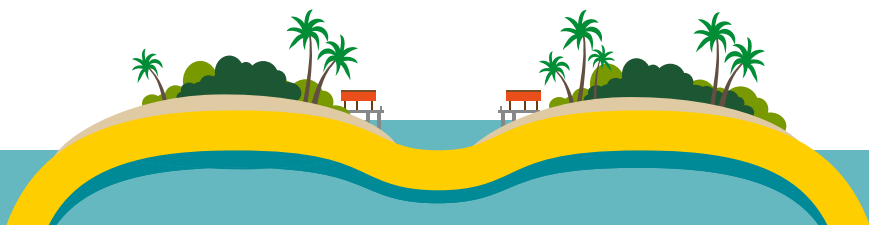
INTRODUCTION

Welcome to the Sisters' Island Marine Park Dive Trails, the first of its kind in Singapore! This is part of the initiative to establish the Marine Park as a Marine Park for ALL, including the active Singapore dive community! It offers a unique and novel underwater experience with the following aims:

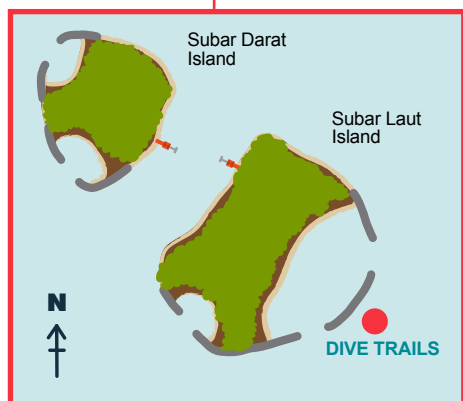


“Only if we understand can we care. Only if we care will we help. Only if we help shall they be saved”.

Jane Goodall



DETAILS OF DIVE TRAILS



NParks Disclaimer:

WHERE

Off the rock bund of Big Sister (Subar Laut).

TWO DIVE TRAILS

These dive trails are aimed at giving you deeper understanding of our local reefs and marine flora and fauna; reef biology.

These trails are self-guided, with signs placed along each underwater route. This waterproof guide will prompt you on your activities along the trails and serve as a data sheet for you to record your findings.

There are two trails.

SHALLOW DIVE TRAIL

No of stations: **10**
Estimated time: **45 min**
Depth: **4–6 m**

DEEP DIVE TRAIL

No of stations: **10**
Estimated time: **45 min**
Depth: **10–16 m**

SISTERS' ISLANDS MARINE PARK DIVE TRAILS

LEGEND



Shallow Dive Trail

Depth: 4–6 m

Reef Zones:

Reef crest and
upper reef slope.



Deep Dive Trail

Depth: 10–16 m

Reef Zones:

Lower reef slope
and sea-floor.

First sign for Shallow Dive Trail

Follow the signs in a
clockwise direction.

First sign for Deep Dive Trail

Follow the signs in an
anti-clockwise direction.



BEFORE THE DIVE

- Divers who are planning to try both trails are recommended to start with the Deep Dive trail.
- We suggest that you carry a copy of the dive trail guide during your dive.

ENJOYING THE TRAIL

- The signs and activities along the way will help you gain a better understanding of the reef biodiversity, and the research conducted in our reefs.
- Enjoy your dive and remember to share your observations.

SAFETY

- Be observant. Keep away from sea urchins, hydroids and jellyfish.
- Remember to check your pressure gauge regularly. Each dive will take approximately 45 minutes to complete.

CARE FOR THE REEF AND TRAIL ELEMENTS

1

Please do not collect or disturb our marine life and their environment.



2

When taking photographs, do not flash excessively or go too close.



3

Please help us keep the signs from being fouled by algae. Use the attached brush to clean the sign.

4

Please avoid using the trail signs for support.

5

Point your fins away from the reef.



6

Avoid pulling the trail ropes.

GREEN FINS



No stepping
on Coral



No stirring
the sediment



No touching or
chasing marine life



No feeding fish



No littering



Don't buy souvenir of
coral and marine life



No spear fishing



Do not anchor on
coral reefs



Do not collect dead
or alive marine life



Use mooring buoys



Report environmental
observations



Submit monitoring
data online



DEEP DIVE TRAIL ACTIVITIES

WELCOME

Observe the conditions at the seafloor.

YOUR FINDINGS

Is it dark?
Is the live hard coral cover high?

STATION 1

Spot the green-coloured branching Sun Coral and the tree-like Black Coral.

YOUR FINDINGS

STATION 2

Spot the different types of sea fans and sea whips around you.

YOUR FINDINGS

Did you notice any symbiotic animals on them?

STATION 3

Observe the Barrel Sponges near this sign and along the trail for symbiotic animals.

YOUR FINDINGS

STATION 4

Spot the different types of sea stars and feather stars along the Trail. Observe the 5-point symmetry that Echinoderms have.

YOUR FINDINGS

STATION 5

Position yourself at this sign and look ahead along the trail. Record the furthest distance you can see from here.

YOUR FINDINGS

The estimated water visibility is m

STATION 6

Observe the schooling fishes around you. What species do you see?

Draw or take photos of the fishes to help you identify them later.

YOUR FINDINGS



STATION 7

Help us conduct a mini fish survey from this sign to the “End of Mini Fish Survey” sign.

As you swim, count the number of fishes within the sea space 2 m above the rope and 2 m on the right and left of the rope.

YOUR FINDINGS

No. of fishes you recorded
10 m from this sign:

Type of fishes you recorded:

STATION 8

Spot the soft corals around you.

YOUR FINDINGS

Did you notice any symbiotic animals attached to them?

STATION 9

Spot nudibranchs along the Trail.

YOUR FINDINGS

STATION 10

Observe the colour wheel. Using the text as a reference, what do the colours look like at this depth?

Take a photo if you have a camera and compare it with a photo of the same wheel at the Shallow Dive Trail.

YOUR FINDINGS

Record the colour you see here:

Red looks

Orange looks

Yellow looks

Green looks

Blue looks

Purple looks

SHALLOW DIVE TRAIL ACTIVITIES

WELCOME

Observe the reef conditions around you.

YOUR FINDINGS

Is the light level high?
Is the live hard coral cover high?

STATION 1

Help us conduct a mini fish survey from this sign to the "End of Mini Fish Survey" sign.

As you swim, count the number of fishes within the sea space 2 m above the rope and 2 m on the right and left of the rope.

YOUR FINDINGS

No. of fishes you recorded
10 m from this sign:

Type of fishes you recorded:

STATION 2

Look out for feather duster worms and flat-worms.

YOUR FINDINGS

STATION 3

Observe the colour wheel. Using the text as a reference, what do the colours look like at this depth?

Take a photo if you have a camera and compare it with a photo of the same wheel at the Deep Dive Trail.

YOUR FINDINGS

Record the colour you see here:

Red looks

Orange looks

Yellow looks

Green looks

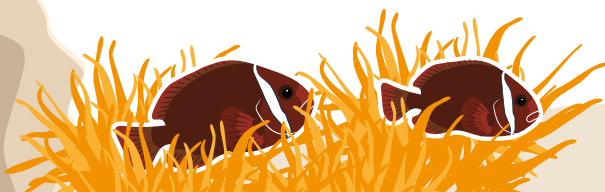
Blue looks

Purple looks

STATION 4

Observe the live Giant clam and see if you can find the mantle and the siphon.

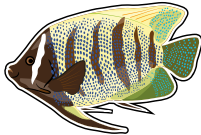
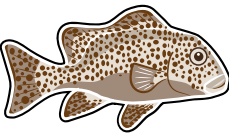
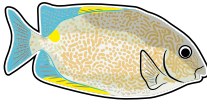

YOUR FINDINGS



STATION 5	YOUR FINDINGS
As you swim along the trail, spot the different forms of hard corals.	

STATION 6	YOUR FINDINGS
Look at the edges of different hard coral colonies. Can you spot the “dead zone” between them?	

STATION 7	YOUR FINDINGS
Look for different coloured algae and zoanthid colonies near this sign and along the rest of the Trail.	

STATION 8	YOUR FINDINGS
Position yourself near the Pinnacle and observe the behaviour of the reef fishes.	What types of reef fishes do you see here? (Tick below)
<div> <input type="checkbox"/>  <input type="checkbox"/>  <input type="checkbox"/> Others </div> <div> <input type="checkbox"/>  <input type="checkbox"/>  <div style="border: 1px solid black; height: 80px; width: 150px; margin-top: 10px;"></div> </div>	

STATION 9	YOUR FINDINGS
If you have a camera, place the scale found on the back page of this Trail Guide near a colony and take a photograph. After the dive, send the photograph to the Marine Parks website.	

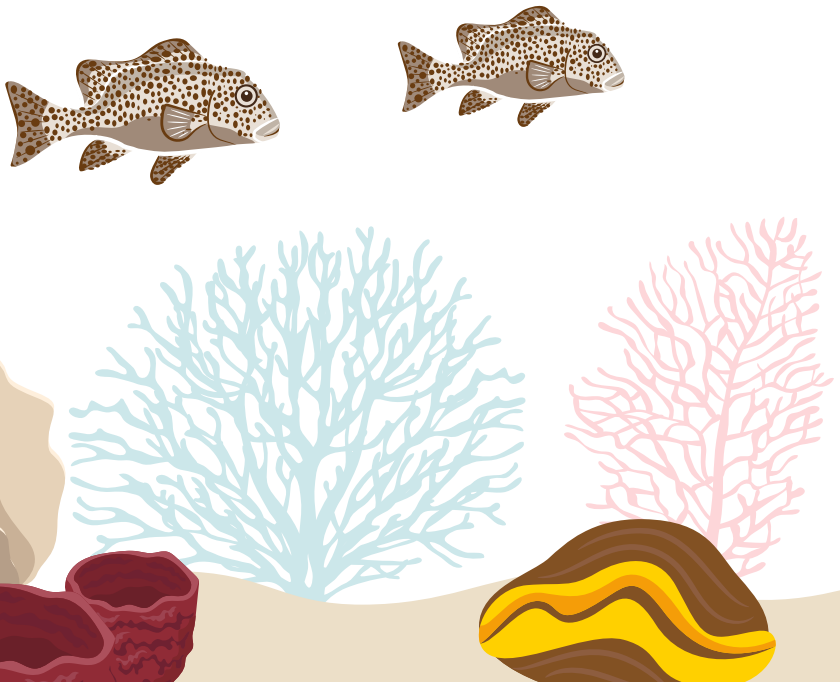
STATION 10	YOUR FINDINGS
Count and record the number of anemones and anemone fishes you observed today.	No. of anemones: <input type="text"/> No. of anemone fishes: <input type="text"/>

AFTER THE DIVE TRAIL

AFTER THE DIVE

What you can do:

- Discuss your “discoveries”.
- Share with us at www.nparks.gov.sg/sistersislandsmarinepark
 - photographs and interesting sightings
 - the data you collected from the mini-research activities along the trail(s).
 - any damage you had observed or enquiries about the trail(s).
- Read more about the reef life, the trails and the data collected (half-yearly update) from divers’ research at The Sisters’ Island Marine Park website www.nparks.gov.sg/sistersislandsmarinepark
- We hope that you will visit the trail(s) again!



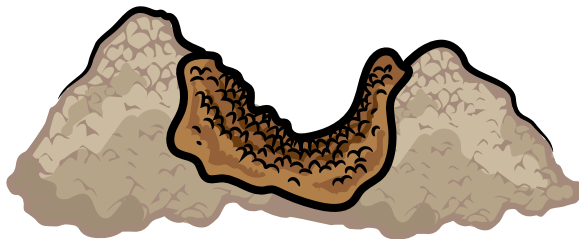
FORMS OF HARD CORALS



Boulder



**Free-living
mushroom corals**



Encrusting

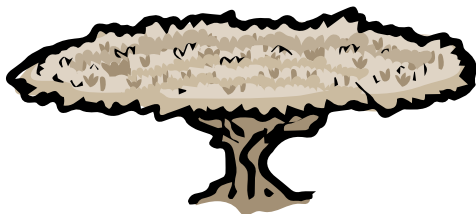
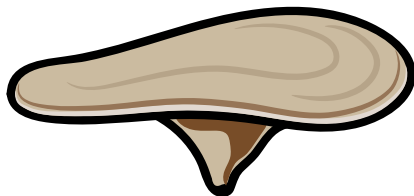
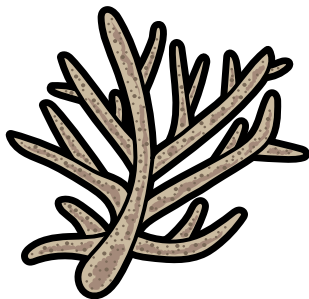


Table-shaped



Plate



Branching

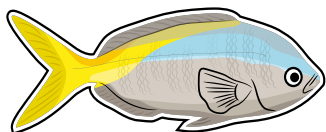


Sub-massive



**Leaf shaped
(foliose) coral**

SOME COMMON REEF FISHES



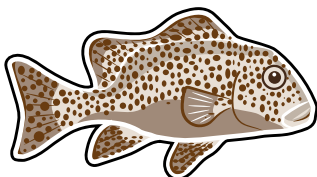
Fusiliers



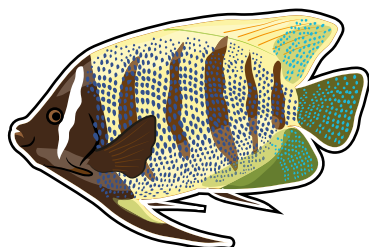
Damselfish



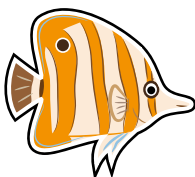
Parrotfish



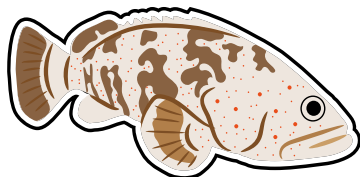
Sweetlips



Angelfish



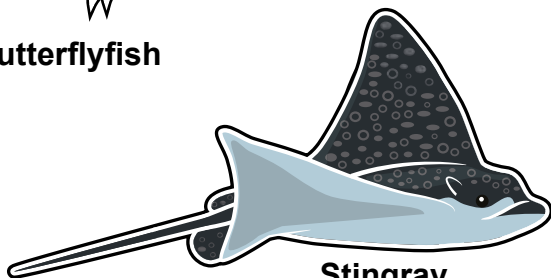
Butterflyfish



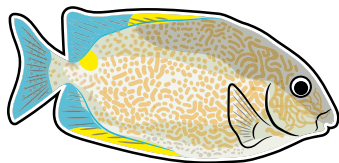
Grouper



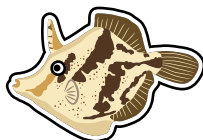
Cleaner Wrasse



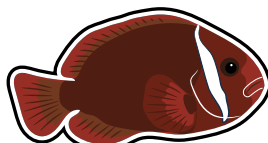
Stingray



Rabbitfish



Filefish



Clownfish



nparksbuzz

Share your love for nature with us at
#nparksbuzz

www.nparks.gov.sg/sistersislandsmarinepark

